



### ROTARY KNOB MANUAL CONTROL STEP ATTENUATOR (DC-1GHZ 60DB RANGE)

#### Product description

- Very small package and broadband performance
- Continuous variable attenuation during operation
- Excellent Repeatability and Long Life Switch
- Low Deviation from Nominal Value
- 50Ω impedance standard upon request
- High power is available upon request
- Custom Configurations Available Upon Request.



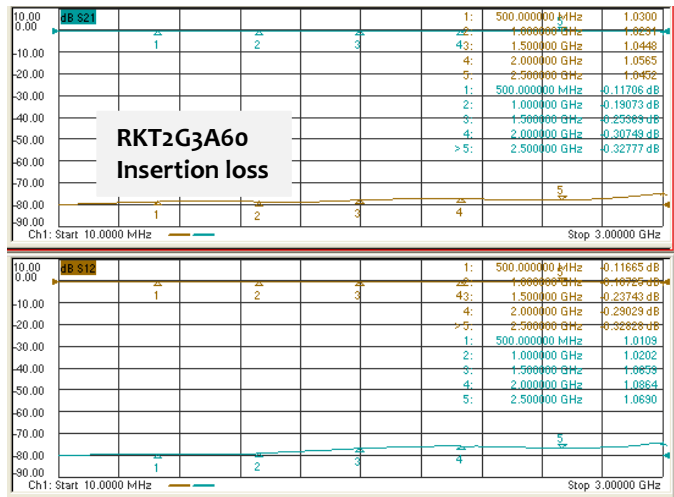
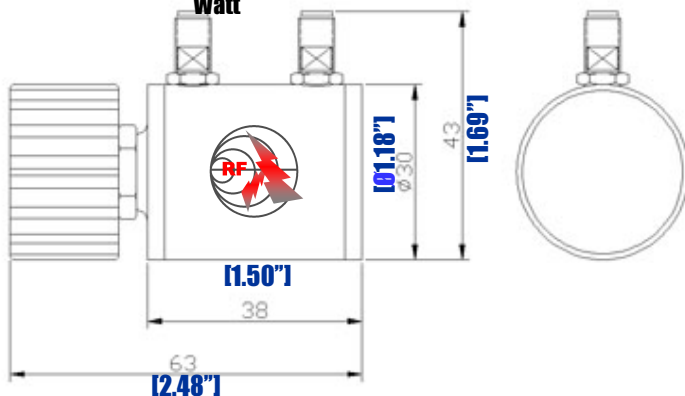
#### Applications:

Include Communication, 3G, Digital Transmission, Radar, Military, Broadcast & Television, science & Research department etc.

Part Number	Frequency	Power (Watts)	Attenuation Range (dB)	Attenuation Step (dB)	VSWR max.	Insertion Loss (dB)	Accuracy (dB)
RKT2G1A60	DC-1GHz	2	60	10	1.20	<0.30	± 0.30

PN: **RKT 2 G X A 60**

Manual Control Handle Attenuator  
Power In Watt  
Freq Unit GHz  
Freq Number  
Product Type  
Attenuation Range



Connector: SMA type, weight: 250g

Temperature (Operational): -10° C~+50° C (Storage) -40° C~+70° C

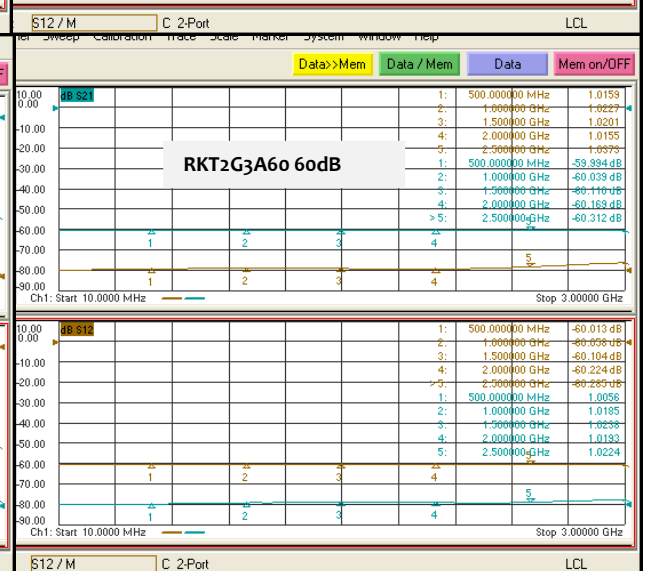
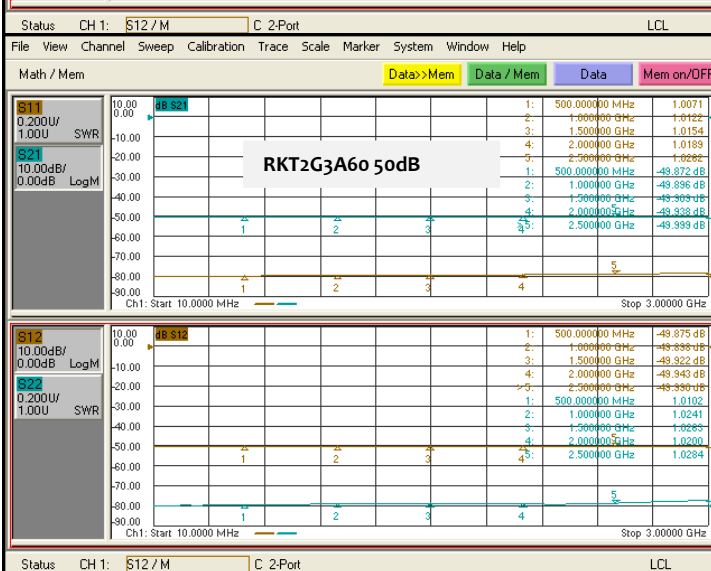
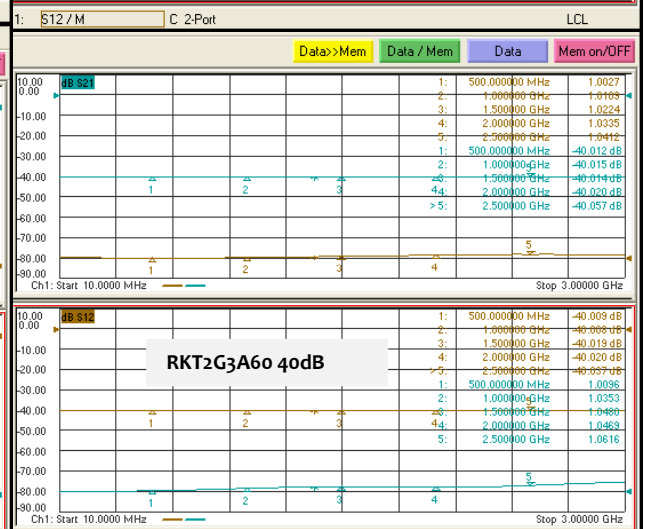
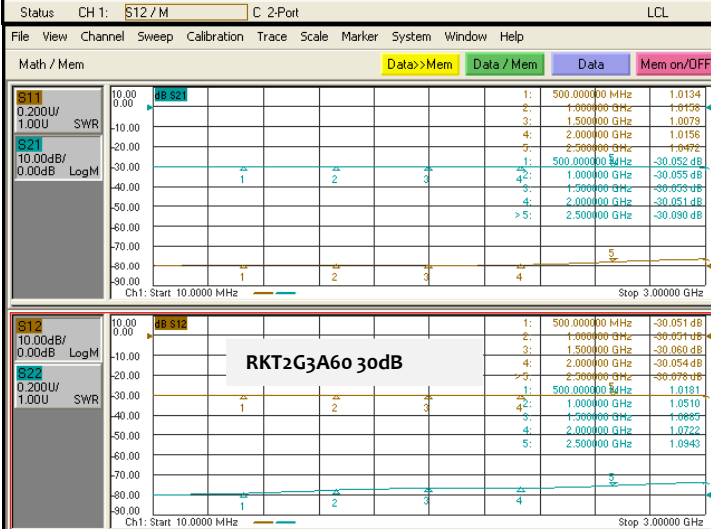
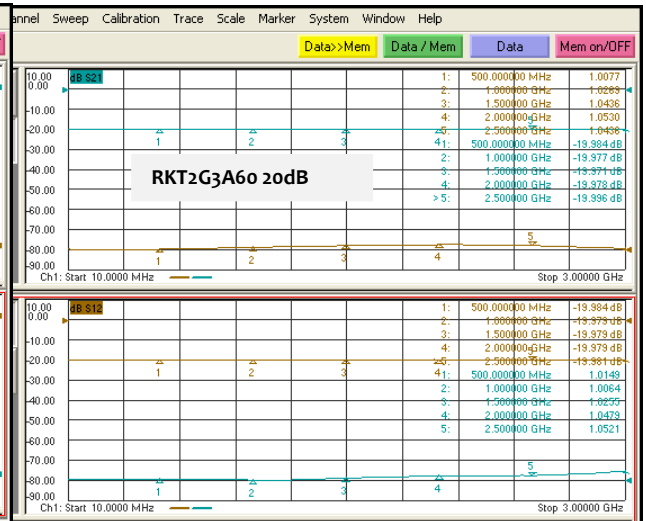
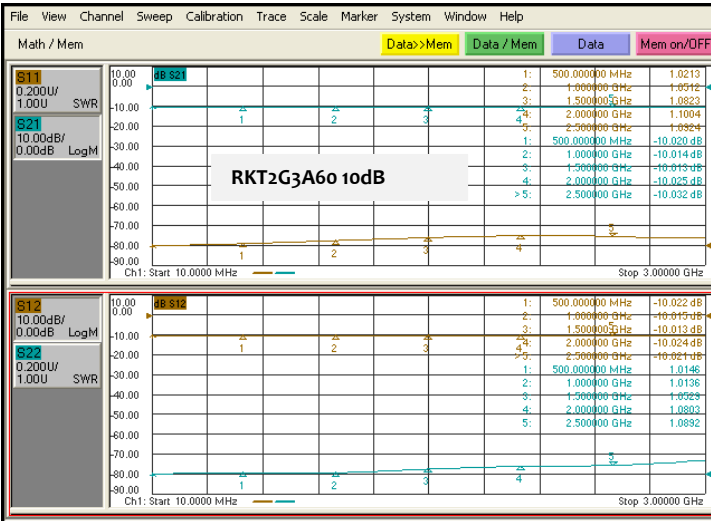
MANUAL CONTROL ROTARY ATTENUATOR (DC-1GHZ 60DB RANGE)



# RF-LAMBDA

The power beyond expectations

## RKT2G1A60



MANUAL CONTROL ROTARY ATTENUATOR (DC-16GHZ 60DB RANGE)