



RF-LAMBDA

The power beyond expectations

ROTARY KNOB MANUAL CONTROL CONTINUOUS ATTENUATOR (0.5-4.0GHZ >20DB RANGE)

Product description

- Very small package and broadband performance
- Continuous variable attenuation during operation
- Excellent Repeatability and Long Life Switch
- Low Deviation from Nominal Value
- 50Ω impedance standard upon request
- 2W CW average power
- Custom Configurations Available Upon Request.

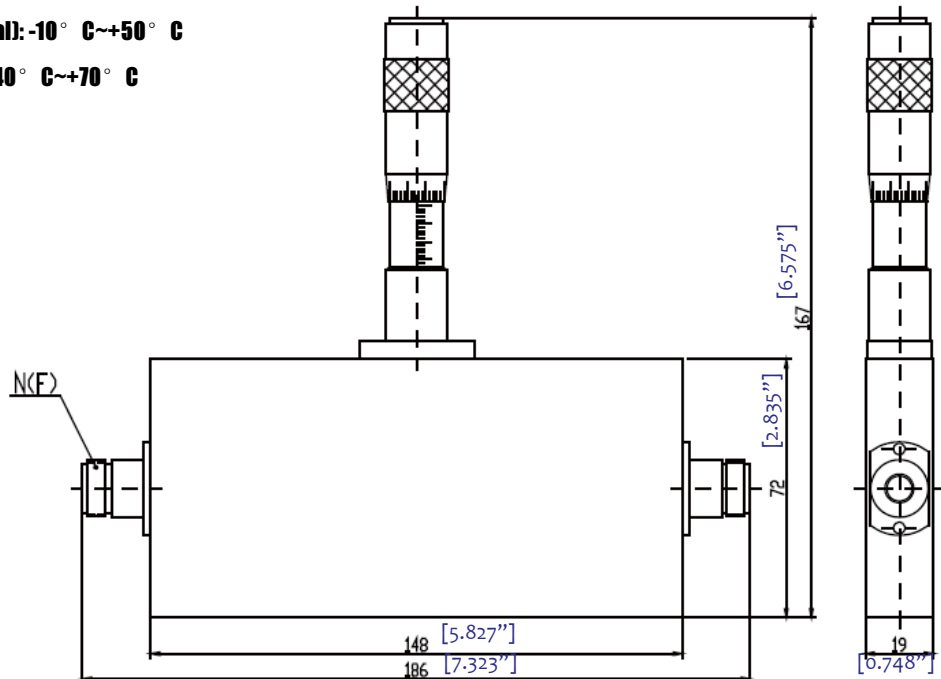


Applications:

Include Communication, 3G, Digital Transmission, Radar, Military, Broadcast & Television, science & Research department etc.

Part Number	Frequency	Power (Watts)	Attenuation Range (dB)	Attenuation Step (dB)	VSWR max.	Insertion Loss (dB)	Accuracy (dB)
RKT2G4A20	0.5-4.7GHz (200MHz bandwidth)	2	>20	Continuous	1.50	≤ 0.50	± 0.5dB(≤10dB) ± 1dB(≤50dB) ± 4%(>50dB)

Connector: N type, weight: 805g
Temperature (Operational): -10° C~+50° C
 (Storage) -40° C~+70° C

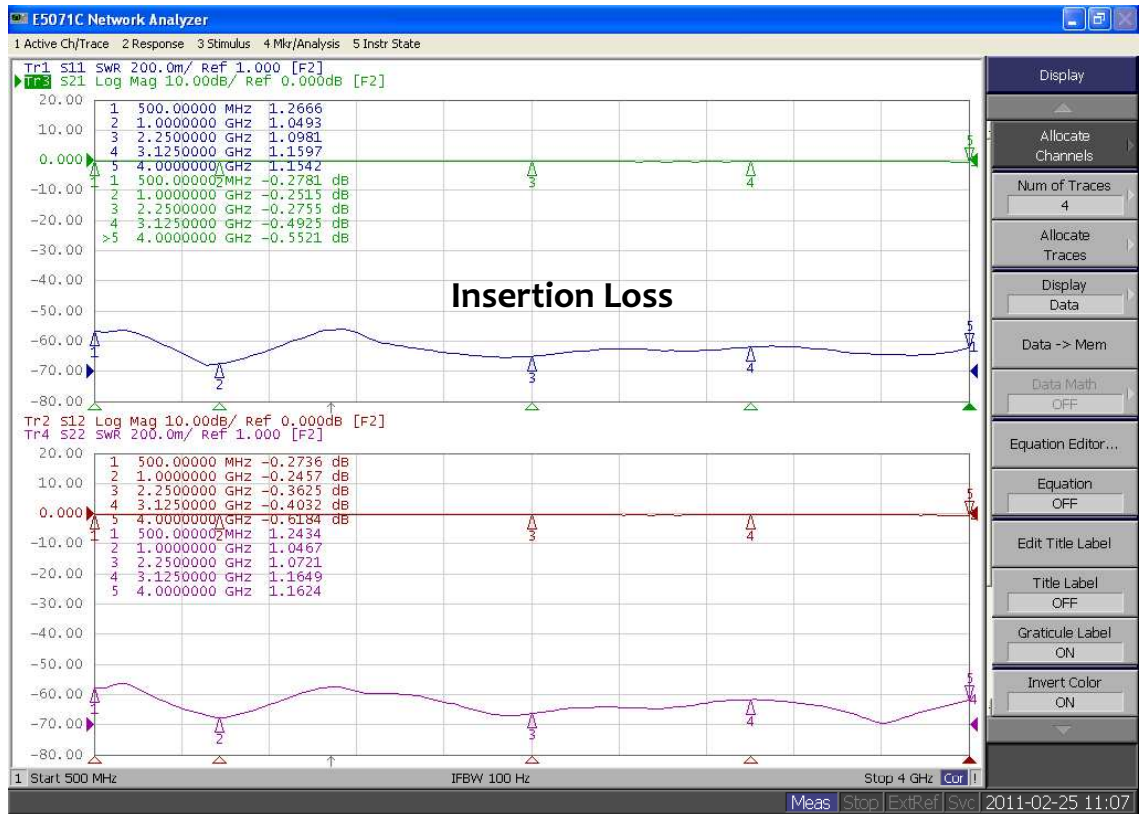


MANUAL CONTROL CONTINUOUS ATTENUATOR (0.5-4.0GHZ >20DB RANGE)



RF-LAMBDA

The power beyond expectations



MANUAL CONTROL CONTINUOUS ATTENUATOR (0.5-4.0GHZ >20DB RANGE)