

USB / Ethernet Absorptive Coaxial SP2T Switch 0.5GHz-43.5GHz



Features

- USB / Ethernet Control
- Control SW included.
- Low Power Cold Switching
- Insertion Loss 4.0dB
- Isolation 60dB
- 50 Ohm Matched

Product Description

RFSP2TA5M43GUSB is an absorptive USB / ethernet controlled coaxial single pole two throw switch with a frequency range of 0.5 to 43.5GHz.

The power input of this switch is 23dBm max. The insertion loss is 4.0dB with a typical isolation of 60dB.

This product features fast switching speed, low insertion loss and high isolation.

The working temperature of this product is between - 40°C and + 85°C

Typical Applications

- Wireless Infrastructure
- Military and Aerospace Applications
- Test Instrumentation
- Radar Systems
- 5G Wireless Communications
- Microwave Radio Systems
- TR Modules
- Research and Development
- Cellular Base Stations

Electrical Specifications(TA = +25°C), USB Powered

Parameter	Min	Typ	Max	Min	Typ	Max	Min	Typ	Max	Units
Frequency Range		0.5 - 8		8 - 26.5			26.5 - 43.5			GHz
Insertion Loss		2.0	2.5		4.0	4.5		4.5	5.2	dB
Insertion Loss Temperature Coefficient		0.003			0.003			0.003		dB/ °C
Isolation	60	85		50	60		45	55		dB
Input VSWR		1.6	2.0		2.5	2.8		1.8	2.5	: 1
Output VSWR		1.6	2.0		2.5	2.8		1.8	2.5	: 1
RF Input Power (CW)			23			23			23	dBm
DC Power Dissipation		0.6			0.6			0.6		W
0.1dB Compression Point (P 0.1dB)		23			23			23		dBm
IIP3		48			40			38		dBm
Current					210 Typ.					mA
Power Supply					USB(+5.0V)					
Control Interface					USB2.0 & Ethernet(IPv4) (Control Cable Included)					
Weight					0.18 Max.					lbs
Impedance					50					Ω
Input / Output Connectors					2.92mm-Female(Input) – 2.92mm-Female(Output)					
Package					Epoxy Sealed (Standard)					
					Hermetically Sealed (Optional)					

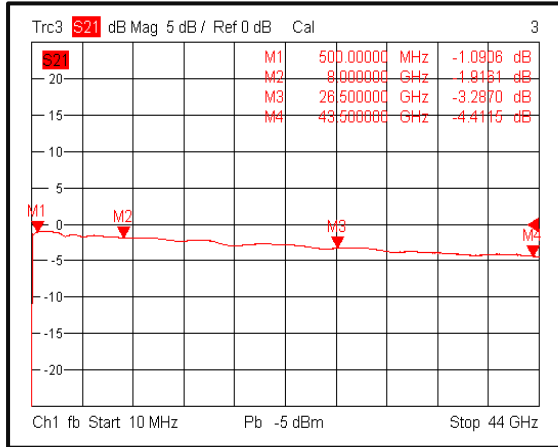
Environmental Specifications and Test Standards

Parameter	Description
Operational Temperature	-40°C to +85°C (Case Temperature)
Storage Temperature	-50°C to +105°C
Thermal Shock	-40°C → +85°C (5 Cycles / 10 hours)
**Random Vibration	MIL-STD-202G Table 214-I, Test Condition Letter C 1.5 Hours Per Axis
High Temperature Burn In	Temperature +85°C for 72 Hours
Shock	1. Weight >20g, 50g half sine wave for 11ms, Speed variation 3.44m/s 2. Weight <=20g, 100g Half sine wave for 6ms, Speed variation 3.75m/s 3. Total 18 times (6 directions, 3 repetitions per direction).
Altitude	Standard: 30,000 Ft (Epoxy Sealed Controlled Environment) Optional: Hermetically Sealed (60,000 ft. 1.0 PSI min)
Hermetically Sealed (Optional)	MIL-STD-883 (For Hermetically Sealed Units)

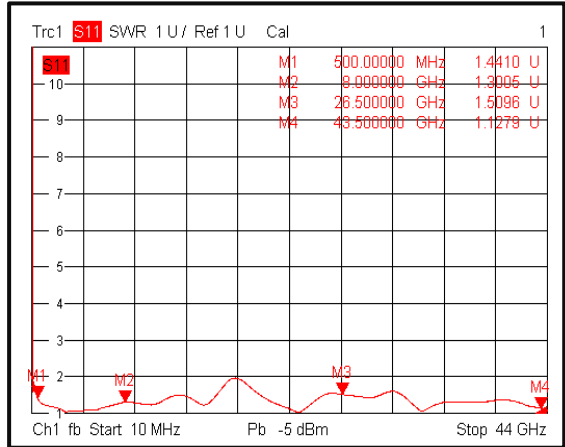
*For vibration testing details please see additional information section.

Typical Performance Plots

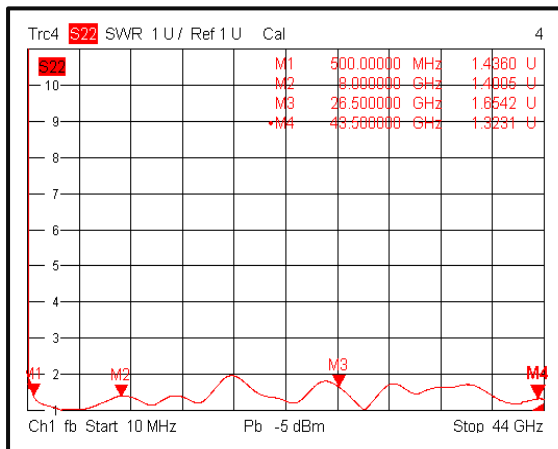
Insertion Loss @+25°C



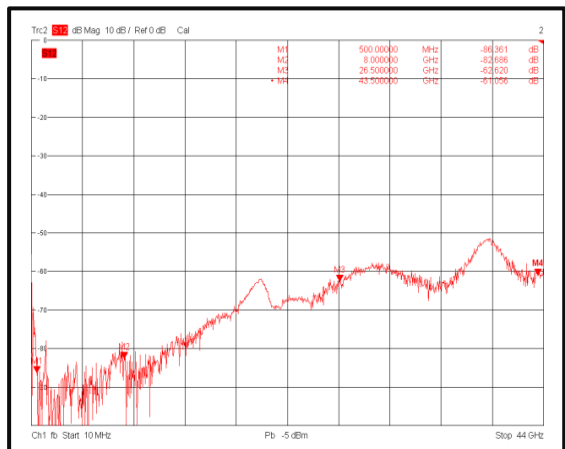
Input VSWR @+25°C



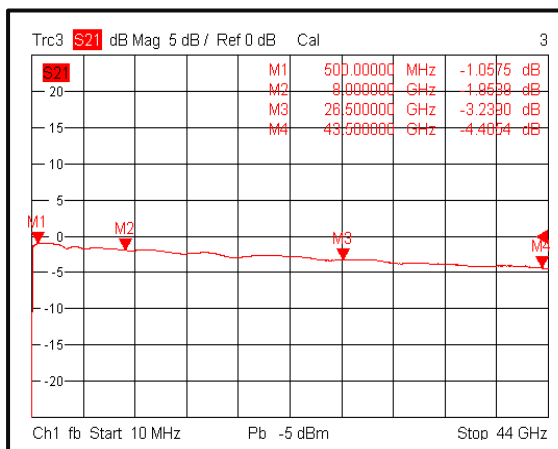
Output VSWR @+25°C



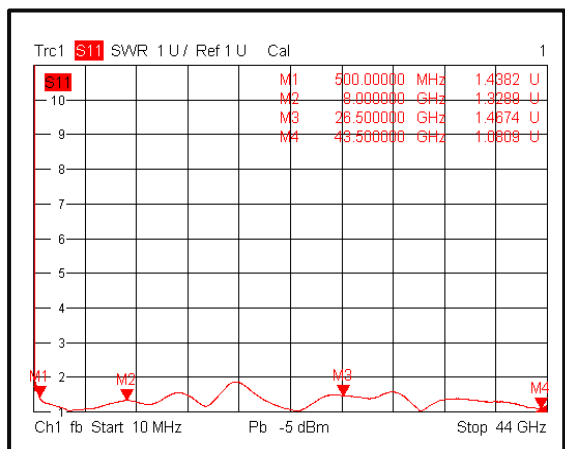
Isolation @+25°C



Insertion Loss @-40°C

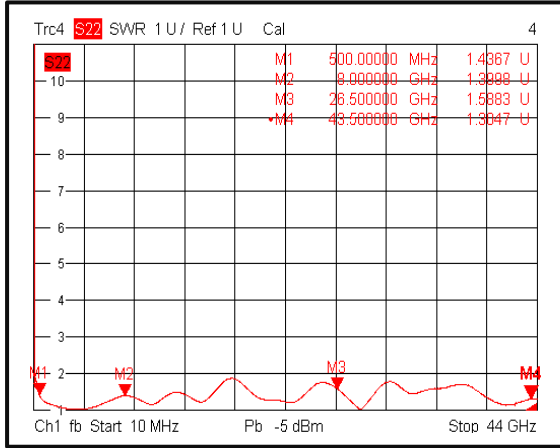


Input VSWR @-40°C

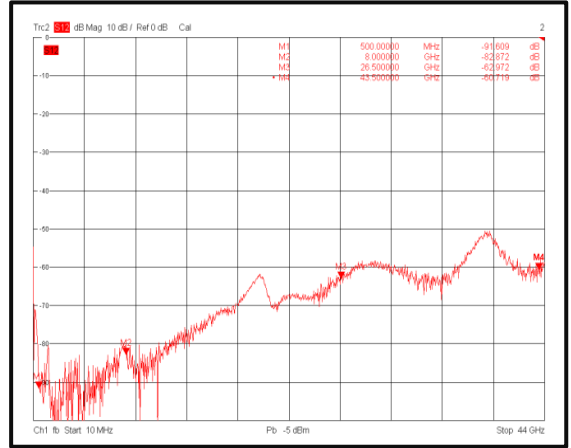


Typical Performance Plots

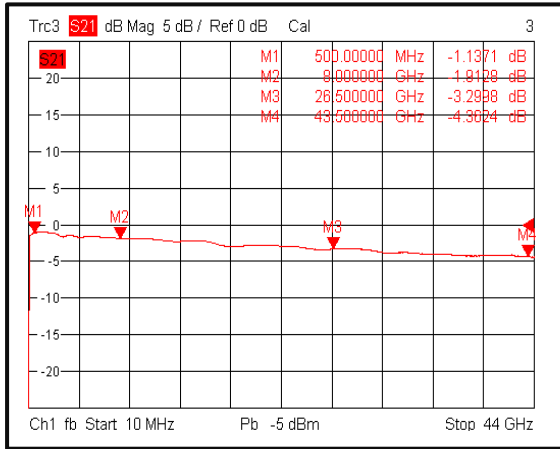
Output VSWR @-40°C



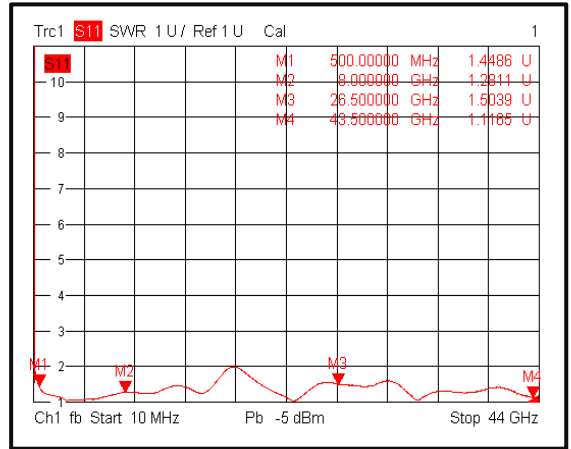
Isolation @-40°C



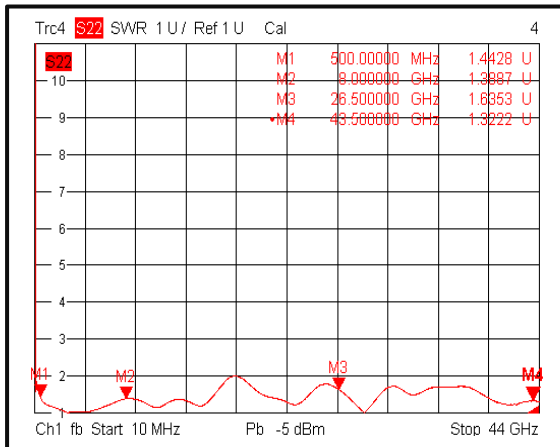
Insertion Loss @+85°C



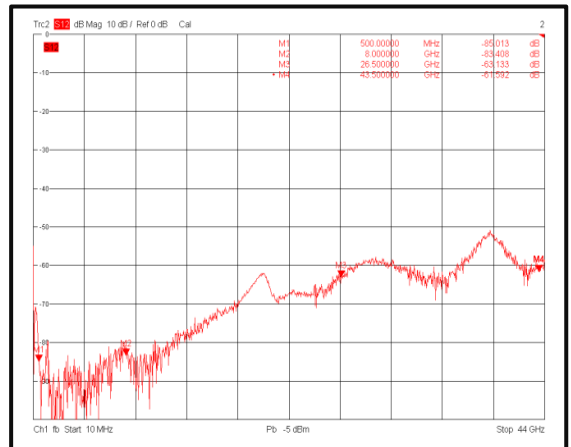
Input VSWR @+85°C



Output VSWR @+85°C

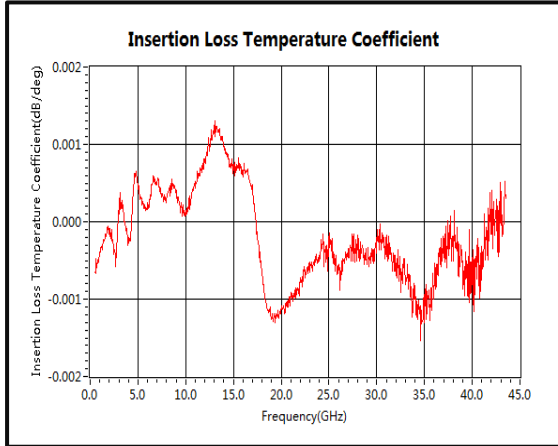


Isolation @+85°C

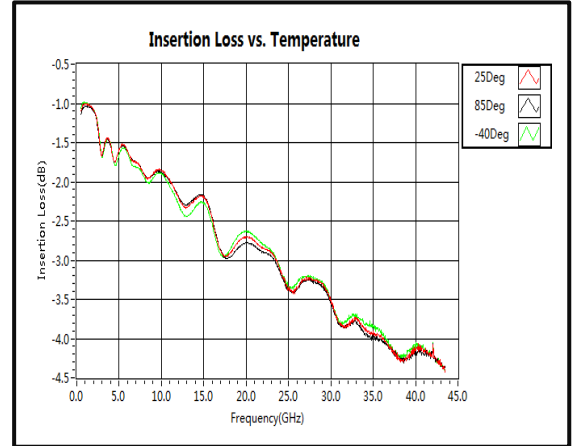


Typical Performance Plots

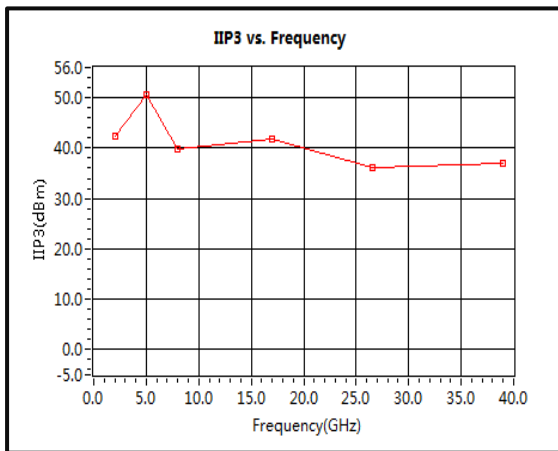
Insertion Loss Temperature Coefficient



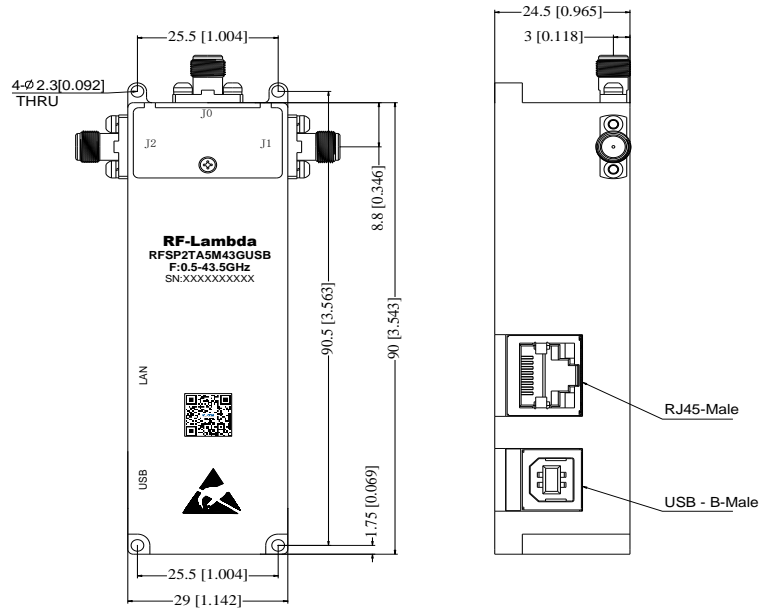
Insertion Loss vs. Temperature



IIP3

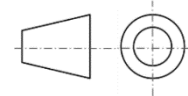


Outline Drawing



Notes:

1. Package Material: Aluminum
2. Finish: Nickel Plated
3. All dimensions are in millimeters [inches].
4. Outline Tolerances ± 0.15 [0.006] Mounting Holes Tolerances ± 0.1 [0.004] unless otherwise specified.



Packing List

ID	Description	QTY
1	Fig a. USB/Ethernet Control RF Switch	1
2	Fig b. USB2.0 Cable (5 feet / 1.5 meter)	1
3	Fig c. Network Cable (6 feet / 2 meter)	1



Fig b.



Fig c.

Control Content Description

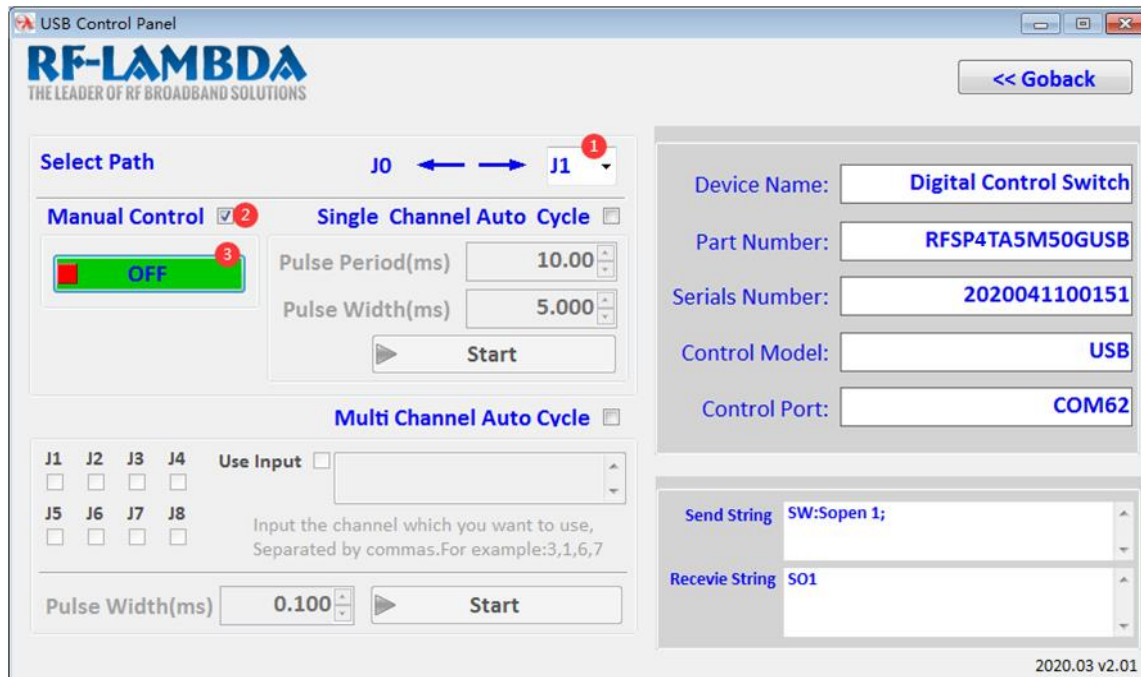
Format Requirement	USB (virtual serial port) Configuration	LAN Interface	Range of Parameters
<p>a. All commands must end with a semicolon. b. All commands are case - insensitive. c. Comma is used to separate multiple parameters in commands. d. All commands are suitable for USB(virtual serial port) and LAN interface.</p>	<p>Baud Rate :115200 Data bits : 8 Parity : None Stop bits : 1 Flow Type :None</p>	<p>IP address and Port. Default:192.168.1.225:5100 Use 'USB Control Panel.exe' to set.</p>	<p>x(channel):1~n. y(period ,ms): 0.01~2000 z(pulse ,ms): 0.01~2000</p>

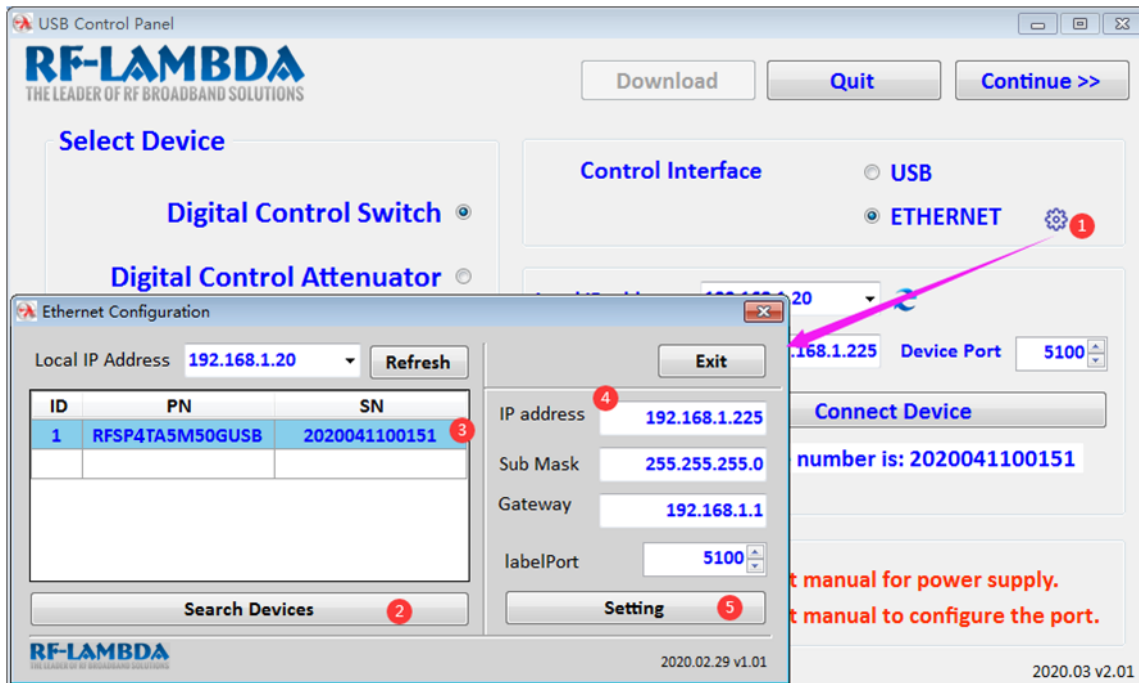
Command Specification

ID	Order	Description	Return	Example
1	*IDN?;	Query product information	Product PN ,SN, Manufacturer , version	*IDN?;
2	Reset;	Reset the product	/	Reset;
3	SW:Sopen x;	Open channel x	SOx	SW:Sopen 2; Return : SO2
4	SW:Sloop x,y,z;	Automatic cycle opening channel x with period as y (ms) and pulse width as z(ms)	SLx	SW:Sloop 2,0.1,0.05; Return :SL2
5	SW:Mloop x1,x2,...,z;	Cycle on channels x1, x2,... with pulse width as z(ms)	MLx1	SW:Mloop 1,2,0.1; Return :ML1
6	SW:Close;	Close all channel. Stop loop ,close all channel.	SC0	SW:Close; Return: SC0

Error Code Query

ID	Return	Description
1	E1	Semicolon missing
2	E2	Incorrect commands
3	E3	Missing space
4	E4	Incorrect parameter format
5	E5	Out of range parameters





Additional Information

Documentation	Webpage
ESD Policy	https://rflambda.com/pdf/rflambda_esd_control.pdf
Connector Torque Specifications	https://www.rflambda.com/pdf/Torque_Specifications.pdf
Random Vibration Test Standard	https://www.rflambda.com/pdf/rflambda_random_vibration_MIL-STD-202G.pdf

Ordering Information

Part Number	Modification	Description
RFSP2TA5M43GUSB	Connectors 2.92mm-Female	0.5GHz-43.5GHz SP2T USB / Ethernet Controlled Switch

Important Notice

The information contained herein is believed to be reliable. RF-Lambda makes no warranties regarding the information contained herein. RF-Lambda assumes no responsibility or liability whatsoever for any of the information contained herein. RF-Lambda assumes no responsibility or liability whatsoever for the use of the information contained herein. The information contained herein is provided "AS IS, WHERE IS" and with all faults, and the entire risk associated with such information is entirely with the user. All information contained herein is subject to change without notice. Customers should obtain and verify the latest relevant information before placing orders for RF-Lambda products. The information contained herein or any use of such information does not grant, explicitly or implicitly, to any party any patent rights, licenses, or any other intellectual property rights, whether with regard to such information itself or anything described by such information.

RF-Lambda products are not warranted or authorized for use as critical components in medical, life-saving, or life sustaining applications, or other applications where a failure would reasonably be expected to cause severe personal injury or death.